



take the **shortcut**

logickeyboard™

About your Apple Logic Pro Audio Extended keyboard

This extensive audio editing layout has been developed at the request of LogicKeyboard particularly for and by Expert Level of Apple Logic Pro Editor's – and being the most extensive application specific keyboard available on the market today.

This layout of LogicKeyboard, LogicKeyset and LogicSkin is not really dependant of the version of Apple Logic Pro you are running in your Macintosh - it can be used with Apple Logic Pro versions; 5.5, 6.0, 7.0 through 8.0 - and is intended to be used together with a special LogicKeyboard Key Command file from the download area of our website. This file can be freely downloaded at www.logickeyboard.com.



BEFORE YOU START

We highly recommend that you familiarize yourself with this user information – as it will give you a detailed description about **"HOW TO START"** - and a short description of the individual key commands function. The naming and a more detailed description can be found in the Apple Logic Pro User Manual.

In Apple Logic Pro there is an **on screen key command window** available – where you will have a total overview and search possibility for all the key commands we have included – and if you like – you can re-program key commands to your own requirements. In Logic Pro hold down **ALT/OPT-key** and press **K-key** – this opens the Key Commands window. We suggest that you make reference to Apple Logic Pro Help and the chapter "Working with Key Commands".

THANK YOU FOR CHOSING LogicKeyboard

Please visit our website www.logickeyboard.com from time to time to check for updated versions, and sign up for our newsletter to be informed about other LogicKeyboard products and developments.



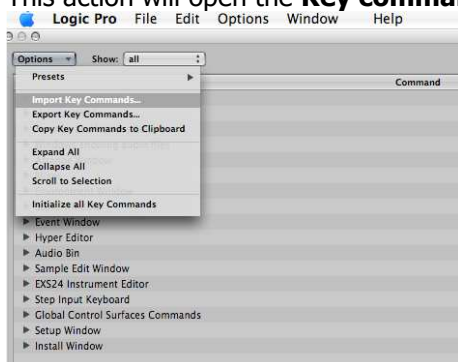
take the **shortcut**

logickeyboard™

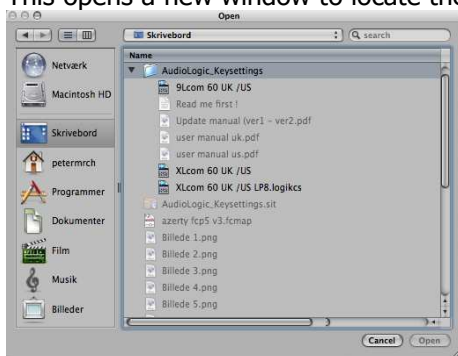
User manual for LogicKeyboard made for use with Apple Logic Pro Audio 5.5 through 8.0

▪ How to start:

- Download the **AudioLogic_Keysettings.zip** from **www.logickeyboard.com** to your desktop.
- Before you import the LogicKeyboard Key Command file into Logic Pro – you must switch the keyboard language setting in your apple menu to either UK (British) or US (American)
 - Mac OS 9 - choose the keyboard in control panels "keyboard".
 - Mac OS X – go to System Preferences, International.
- Open Apple Logic Pro.
 - Hold down the **ALT/OPTION-key** and press the **K-key**.
 - This action will open the **Key commands window**.



- Click **Options** and click **Import Key commands**.
- This opens a new window to locate the **AudioLogic_Keysettings.zip**



- Locate the folder where you dropped the **AudioLogic_Keysettings.zip** and import the key command file matching your Mac OS and Apple Logic Pro version.
 - **9Lcom 60 UK_US** - if you use Mac OS 9 system and Logic Pro 5.5, 6 or 7
 - **XLcom 60 UK_US** - if you use Mac OS X and Logic Pro 5.5, 6 or 7
 - **XLcom 60 UK_US LP8.logikcs** - if you use Mac OS X and Logic Pro 8 (**NEW!!**)
- **And there you are!**
 - More than 500 short cut key commands made available for your editing work.



take the **shortcut**

logickeyboard™

▪ What do you see?

- We are almost certain that you find several of useful key commands which will help you to work quickly and efficiently with your Digital Audio Workstation - and free you from lots of "mouse-actions". Work improvements up to **60%** have been reported.
- Icons and text on TOP of the keys - opens a variety of windows when you press the key.
- The FRONT text of the keys is linked to hold down CTRL-key while pressing the key.
- We highly recommend that you familiarize yourself with this manual – and that you take a closer look on the Logic Pro Key Commands Window (ALT/OPTION + K).
- While you are in the Key Command window try out the different keys, alone - and in combination with ctrl, shift, option and Command. Every time you press a key you will see the command, the key - or key combination activates. This is especially helpful for learning all the commands which are hidden and embedded in the software.
- ***Do not try to memorize everything from day one. You will very quickly learn your favorite short cuts.***

Known exceptions

Some commands are not Global Key Commands and as Logic Pro and Mac OS have evolved over time - not all functions will be available throughout all Logic Pro Versions – some known exceptions are listed below:

- At some occasions the F-keys will not function as specified in this user information – this is not a fault of the key command file but due to MAC OS is using some shortcut keys linked to the F-keys. This can easily be changed by going to System Preferences, International, Keyboard and Mouse, Keyboard shortcuts – click out the F-keys and they will then work in Logic Pro.
- If using the LogicKeyboard with a Shuttle Pro or Express you might need to set the keys you want to use on the Shuttle yourself – check the user manual for the Shuttle (can be found at www.contourdesign.com/support.htm).
- F 14 Logic Pro 8 does not support this function any more.
- F 14 + ctrl: Logic Pro 6 does not support this function.
- F 14 + ctrl + shift: Logic Pro 6 does not support this function.
- In versions lower than Logic Pro 8 you could not recall screen sets or go to marker with the numeric part of the keyboard.
- In the first row THE NOTE VALUES on 1-8, CHORD on 9 and REST on 0 will only be active while holding down **the alt/option-key** and only in MIDI IN mode.
- In other situations 1 to 9 are where you Recall Screenset 1 to 9, CTRL + 1 to 9 are where you Recall Screenset 11 to 99.
- In the MIDI IN mode A, B, C, D, E, F & G are used for typing the different notes, and ALT/OPT + CTRL + 1 to 6 are used for octaves.
- There are more commands available in MIDI IN mode; you find these commands under KEYBOARD INPUT in the Key Command list (alt/option + k).
- 1 – 0 + shift is equivalent to: Go to Marker 1 to 10 , 1 - 0 + shift + ctrl is Go to Marker 11 to 20



take the **shortcut**

logickeyboard™

The different key colours

The Light Purple keys.

F 1-12 · 0 Keys represent the most used TOOLS. Simply press the key with the tool you want. (The tool must be in the working area of the window). With the ctrl key hold down the F keys open various windows.

Key 4 (Mute selected object / track) in the numeric keyboard is also Light Purple, hence it in most situations have the same functions as the mute tool. The two last Light Purple keys (· and /) are used for different nudge purposes. In MIDI IN mode they are used for transpose (with option held down).

F 13 to F15 works just as F 1-12 but are different coloured to match the colour in Logic Audio.

The Peach keys.

1 - 9 keys are where you recall Marker 1 - 20 (includes 0 light purple key) and screen set 1 - 99

In MIDI IN (F14) mode the 1 - 0 + OPTION cover a lot of note / score functions. (Includes 0 light purple key) TIP: when you work in this mode KEEP HOLDING DOWN THE OPTION KEY.

The Purple Keys

Q · W · E · R are used in the AUDIO WINDOW. (E + Shift (Strip Silence) works from the Arrange window).

The Yellow Keys.

T · Y · U · I · O are used to make and recall different Zoom.

6 (solo) in the numeric keyboard is yellow so it matches the colour in Logic Audio.

The Orange Keys.

P · [·] · K · L · ; · ' · \ are used in the SAMPLE EDIT window (F12).

· (pause) and 8 (replace) in the numeric keyboard are orange so they match the colour in Logic Audio.

Bear in mind that you can playback the samples in different ways using the spacebar with ctrl, option and Command.

The Turquoise keys.

A · S · D · F · G · num lock handles loop, aliases, repeating objects, quantizing, erasing midi events. / (Metronome) in the numeric keyboard.

F13 · num lock and F15 are Turquoise so they match the colour in Logic Audio.

The Blue Keys.

H · J activate different hyper modes.

= (Sync) and * (catch clock) in the numeric keyboard are blue so they match the colour in Logic Audio.

The Pink Keys.

Command C · V · B and · - · + in the numeric keyboard activate the different ways to make use of the locators.

The Olive Keys.

N · M · , are used to create / delete tracks, move objects to other tracks etc.

0 · 1 · 2 in the numeric keyboard are used for the different stop, rewind, forward, scroll and shuttle possibilities

- and = in the first row are used for selecting different Previous / Next screens, windows, markers, tools, part boxes and stacking, tile windows etc.

The Green Keys.

` · Z and the numeric keyboard keys enter (play) 5 (cycle) and 7 (drop) are different playback keys and modes.

The Red Keys

3 in the numeric keyboard Record + different record options.

F 14 Midi in Mode

The Light Blue keys.

Help · Top · Page Up · del · end · Page Down cover different Window action and Mix automation modes (Key + Command).

It also covers Digital Mix down / Merge, In and Out of Sequence + Clear Overload and New Object for the Environment Windows + different group and automate options.

The Original Keys.

Esc show / hide floating toolbox, set tool.te Revert To Current Screen set, Lock / Unlock current Screen set. Spacebar: Different Play / Stop functions

Arrows: Left · Up · Down · Right. Zoom in / out horizontally and vertically. Chose track / object, various toggle, move and page functions.

- 2 -

THE KEY COMMANDS ONE BY ONE - from left to right - in rows from top to bottom.

Function Key row

- 3 -

(esc)

Esc: Show Tools.

Esc + ctrl: lock/unlock current screen set

Esc + option: revert to current screen set

Light Purple: (F1 to F12)

F 1: Arrow Tool

F 1 + ctrl: Open Arrange.

F 1 + ctrl + shift: Toggle Arrange Window.

F 2: Scissor Tool

F 2 + ctrl: Open Environment.

F 2 + ctrl + shift: Toggle Environment Window.

F 3: Pencil Tool

F 3 + ctrl: Open Score.

F 3 + ctrl + shift: Toggle Score Window.

F 4: Text Tool




F 4 + ctrl: Open Event.

F 4 + ctrl + shift: Toggle Event Window.




take the **shortcut**

logickeyboard™

F 5: Glue Tool
F 5 + ctrl: Open Transport.
F 5 + ctrl + shift: Toggle Transport Window.
F 6: Eraser Tool
F 6 + ctrl: Open Transform.
F 6 + ctrl + shift: Toggle Transform Window.
F 7: Magnifying Glass Tool
F 7 + ctrl: Open Matrix.
F 7 + ctrl + shift: Toggle Matrix Window.
F 8: Mute Tool
F 8 + ctrl: Open Hyper.
F 8 + ctrl + shift: Toggle Hyper Window.
F 9: Solo Tool
F 9 + ctrl: Open Preferences.
F 9 + ctrl + shift: Toggle Preferences Window.
F 10: Velocity Tool
F 10 + ctrl: Open Track Mix.
F 10 + ctrl + shift: Toggle Preferences Window.
F 11: Quantize Tool
F 11 + ctrl: Open Audio.
F 11 + ctrl + shift: Toggle Audio Window.
F 12: Audio Cross fade Tool.
F 12 + ctrl: Open Sample Editor.
F 12 + ctrl + shift: Toggle Sample Editor Window.
 Turquoise: (F13)
F 13: Page Edit.
F 13 + ctrl: Open Parameters.
F 13+ ctrl + shift: Hide / Show Parameters.
 Red: (F14)
F 14: Midi In (only in Mac OS 9 or earlier)
F14 + command: Midi In (only in Mac OS X or higher)
F 14 + ctrl: Keyboard. (Do not function at the moment)
F 14 + ctrl + shift: Toggle Keyboard Window. (Do not function at the moment)
 Turquoise: (F15)
F 15: Midi Out (only in Mac OS 9 or earlier).
F15 + command: Midi Out (only in Mac OS X or higher).
F 15 + ctrl: Audio Rec Path.
F 15+ ctrl + shift: Audio Configuration.
F 15+ ctrl + Command: Open System Performance.
F 15+ shift + Command: Refresh Audio Configuration.
F 15+ ctrl + shift : Audio Configuration.
F 15+ ctrl + shift + Command: Audio Hardware Setup.

Row 1

 (§)

 Peach: (1 to 9)

1 to 9: Recall Screen set 1 to 9
1 to 9 + ctrl: Recall Screen set 11 to 99
1 to 0 + Shift: Go to Marker 1 to 10.
1 to 0 + Shift + ctrl: Go to Marker 11 to 20.
1 to 8 + option: Different Note Values. (Only In Midi IN

Mode).

1 to 6 + option + ctrl: Octave 1 to 6. (Only In Midi IN Mode).

1 to 8 ctrl + option + Command: Velocity from 16 to 127.

9 + option: Chord. (Only In Midi IN Mode).

1 to 6 + option + ctrl + shift: Different Part box Note Values.

 Light Purple: (0)

0: Marquee Tool

0 + command: Crop objects outside Marquee Tool

0 + ctrl: Open Colour.

0 + option: Rest. (Only In Midi IN Mode).

0 + option + ctrl: Octave 0. (Only In Midi IN Mode).

 Olive: (- =)

-: Previous Screen.

- + ctrl: Previous Tool.

- + ctrl + shift: Stack Window.

- + ctrl + shift + option: Tile Windows.

- + option + ctrl + Command: Previous Part box.

- 4 -

- + option + ctrl + shift + Command: Previous Part box Symbol.

=: Next Screen.

= + ctrl: Next Tool.

= + ctrl + shift: Zoom Window.

= + ctrl + shift + option: Tile Windows Horizontally.

= + option + ctrl + Command: Next Part box.

= + option + ctrl + shift + Command: Previous Part box Symbol.

 Light Blue: (Help, Top, Page Up)

Help: Send Reset Controllers.

Help + ctrl: New Object.

Help + Command: Set All Tracks to Automation Write.

Help + ctrl + shift: Toggle (Mute) Audio Aux.

Help + Command + option: Toggle Currant Track Automation Write / Read.

Help + Ctrl + option: Delete currently visible Automation data of current Track.

Help + option: Delete All Automation Data of All Tracks

Help + ctrl + shift + option + Command: Toggle Automation controlling volume.

Top: Page Left-Most.

Top + ctrl: Overload.

Top + shift: New Standard Instrument

Top + Command: Set All Tracks to Automation Touch.

Top + ctrl + shift: Toggle (Mute) Audio Bus.

Top + Command + option: Toggle Currant Track Automation

Touch / Read.

Top + Command + option + ctrl: Automation Event Edit.....

Top + option: Move Current Object Data to Track Automation.



take the **shortcut**

logickeyboard™

Top + ctrl + shift + option + Command: Toggle Automation controlling Pan.
Page Up: Page Top.
Page Up + ctrl: Go into Folder or Sequence.
Page Up + Command: Set All Tracks to Automation Off.
Page Up + shift + Command: Pack Folder.
Page Up + Command + option: Toggle Current Track Automation Off / Read.
Page Up + ctrl + shift: Toggle (Mute) Input.
Page Up + ctrl + option + Command: Write to Right Locator.
Page Up + ctrl + option: Previous Plug-In Setting
Page Up + option: Move Current Track Automation Data to Object.
Page Up + ctrl + shift + option + Command: Toggle Automation controlling Mute.

■ Turquoise: (num lock)

Num lock: Hide
Num lock + ctrl: Toggle Hide
Num lock + ctrl. + shift: unhide all tracks

■ Blue: (=)

=: Sync Intern / Extern.
= + ctrl: Open Sync.
= + ctrl + shift : Lock SEMPTE Position.
= + ctrl + shift + option: Unlock SEMPTE Position.
= + Command: Open Movie.

■ Turquoise: (/)

/: Midi / Monitor Metronome Click.
/ + ctrl: tap Tempo.
/ + ctrl + shift : Open Graphic Tempo.
/ + ctrl + shift + option: Open Tempo Operations.
/ + Command: Open Movie Again.
/ + shift: Open Tempo List.
/ + ctrl + shift + option: + Command: Open Tempo Interpreter.
/ + ctrl + option + Command: Adjust Tempo using object length and Locators.

■ Blue: (*)

*: Sync Catch Clock Position.
* + ctrl: Pickup Clock.
* + ctrl + option: Pickup Clock & Select Next Event.
* + Command: Open Movie Again as Float.

Row 2

■ (Tab)

Tab: Numerical edit of event position
Tab + ctrl: Local position.
Tab + ctrl + shift: Duplicate events and numerical Edit.
Tab + option: Copy value to all following events.
Tab + option: + ctrl: Length as absolute position.

■ Purple: (Q W E R)

Q: Select Unused.
Q + ctrl: Hide Region.
Q + ctrl + shift: Select Unused Instruments.

Q + option: Octave - 1. (Only In Midi IN Mode).
Q + option: + ctrl: Octave - 2. (Only In Midi IN Mode).
Q + Command: Quit.
W: Select Used.
W + ctrl: Show Region.
W + ctrl + shift: Select Used Instruments
W + option: Octave + 1. (Only In Midi IN Mode).
W + option: + ctrl: Octave + 2. (Only In Midi IN Mode).
W Command: Close Window.
W Command + option: Close Floating Window.
E: Strip Silence.
E + shift: Strip Silence (from Arrange Window).
E + ctrl: Optimize.
E + option: Note E. Only in MIDI IN mode.

- 5 -

R: Add Region.
R + ctrl: Move Files.
R + ctrl + option: Convert Regions to Individual Audio Files.
R + ctrl + shift: Copy/convert files.
R + shift: Add Audio file.
R + Command: Open Audio Record Window.

■ Yellow: (T Y U I O)

T: Zoom to fit in Locators, store navigation snapshot.
T + ctrl: Reset Zoom.
T + Command: Toggle Selection.
Y: Zoom Selection.
Y + ctrl: Reset All Individual Track Zoom.
Y + Command: Store Navigation Snapshot.
Y + ctrl + shift: Zoom to fit Selection Horizontally, store navigation snapshot.
Y + Command: Store navigation snapshot.
Y + shift + option: : Waveform vertical zoom x 1 (normal)
U: Zoom 1
U + Shift.: Save Zoom 1.
U + ctrl: Auto Track Zoom.
U + shift + option: : Waveform vertical zoom x 2
I: Zoom 2
I + Shift: Save Zoom 2.
I + ctrl: Track Zoom Out.
I + shift + option: Waveform vertical zoom x 4
O: Zoom 3.
O + Shift: Save Zoom 3.
O + ctrl: Individual Track Zoom In.
O + Command: Open
O + shift + option: Waveform vertical zoom x 8
■ Orange Keys. (P [])
P: Change Gain
P + ctrl: Reverse.
P + option: Create New Region.
P + Command: Print.
P + ctrl. + shift: Open project manager.
[: Invert.
[+ ctrl: Fade In.



take the **shortcut**

logickeyboard™

[+ option : Region ...Selection.

]: Trim.

] + ctrl: Fade Out.

] + option: SelectionRegion.

■ Light Blue. (Del Bottom Page Down)

Del: Toggle group Clutch.

Del + ctrl: Digital Mix down / Merge.

Del + ctrl. + option: Open group Settings.

Del+ Command + option + ctrl: Automation Event Edit.....

Del + option: Next Plug-In Setting.

Del +ctrl + shift: Toggle Auto Input Monitoring.

Del + option: Delete All Automation Data of Current Track.

Del + ctrl + shift + option + Command: Toggle

Automation controlling Send levels

Bottom: Page Right-Most.

Bottom + ctrl: Object Content.

Bottom + Command: Set All Tracks to Automation Latch.

Bottom + ctrl + option + Command: Automation Folder.

Bottom + ctrl + shift: Toggle (Mute) Audio Track.

Bottom + Command + option: Set Current Track

Automation Latch / Read.

Bottom + Option: Move All Object Control Data to Track Automation.

Bottom + ctrl + shift + option + Command: Toggle

Automation controlling Plug-ins.

Page Down: Page Bottom.

Page Down + ctrl: Go out of Folder or Sequence.

Page Down + shift + Command: Unpack Folder.

Page Down + Command: Set All Tracks to Automation Read.

Page Down + Command + option: Set Currant Track Automation Read.

Page Down + Command + option + ctrl: Write to End.

Page Down + ctrl + shift: Toggle (Mute) Audio Outputs.

Page Down + ctrl + option: Next Plug-In Setting

Page Down + option: Move All Track Automation Data to Object

Page Down + ctrl + shift + option + Command: Toggle Automation controlling Solo.

■ Green: (7)

7: Drop

7 + ctrl: L Auto Drop by Song Position.

7 + ctrl + shift: Set L Auto Drop Point By rounded Song Position.

■ Orange: (8)

8: Replace

8 + ctrl: R Auto Drop by Song Position.

8 + ctrl + shift: Set R Auto Drop Point By rounded Song Position.

■ Purple: (9)

9: Link Window (same level).

9 + ctrl: Create Marker.

9 + shift: Create Marker without rounding.

9 + Command: Delete Marker.

9 + option: Open Marker List.

9 + ctrl + option: Open Marker List as float.

9 + ctrl +shift: Open Marker Text.

9 + ctrl + option + Command: Open Marker Text as Float.

■ Pink: (-)

-: Go To Left Locator.

- + ctrl: Set L Locator.

- + ctrl + shift: Set L Locator by Rounded Song Position.

- + ctrl + option: Move Locators backwards by Cycle Length.

- + ctrl + option + Command: Set L Locator by Song Position.

- + shift: Set Locators by previous Marker & Enable Cycle.

- + Command: Set Next Lower Format.

- 6 -

Row 3

■ Turquoise: (A S D F G)

A: Toggle Loop.

A + ctrl: Turn Loops to Real Copy.

A + shift: Turn Loops to Aliases.

A + option: Note A. Only in MIDI IN mode.

A + option + shift: Note A*. Only in MIDI IN mode.

A + Command: Select All.

S: Select Overlapped Objects.

S + ctrl: Repeat Objects.

S + ctrl + shift: Select Empty Objects.

S + shift: Remove overlaps

S + Command: Save.

S + Command + option: Save as.

D: Make Alias

D + ctrl: Turn Alias to Real Copy.

D + ctrl + option: Select All Aliases of Object.

D + ctrl + option + Command: Find Original of Alias.

D + option: Note D. Only in MIDI IN mode.

D + option + shift: Note D*. Only in MIDI IN mode.

D + Command: Deselect All.

F: Erase outside Locators.

F + ctrl: Erase inside Locators.

F + ctrl + shift: Erase outside Object Borders.

F + option: Note F. Only in MIDI IN mode.

F + option + shift: Note F*. Only in MIDI IN mode.

F + Command: Select All Following.

F+ shift: Refresh freeze files.

G: Quantize next Value.

G + ctrl: Quantize previous Value.

G + ctrl + shift: Quantize again.

G + ctrl + option: Quantize Again.

G + option: Note G. Only in MIDI IN mode.

G + option + shift: Note G*. Only in MIDI IN mode.



take the **shortcut**

logickeyboard™

Blue: (H J)

H: Hyper Draw: Volume.
H + shift: Hyper Draw: Note velocity.
H + ctrl: Hyper Draw: Modulation.
H + ctrl. + shift: Hyper Draw: Disable.
J: Hyper Draw: Pan.
J + shift: Hyper Draw: Other.
J + ctrl: Hyper Draw: Pitch Bend.
J + ctrl. + shift: Hyper Draw: Auto Define.

Orange: (K L ; ' \)

K: Quantize Engine.
K + ctrl: Time & Pitch Machine.
K + ctrl. + shift: Adjust object to nearest bar.
K + ctrl. + option: Adjust object to locators.
K + option: Open Key Commands.
L: Groove Machine.
L + ctrl: Silencer.
L + ctrl + shift: Make Groove Template.
L + ctrl + option + Command: Import DNA Groove Template.
L + ctrl + shift: + option: Remove Groove Template from List.
:: Go to Region Start.
; + ctrl: Audio Energizer.
; + option :Go to Selection Start.
' : Go to Region Anchor.
' + ctrl: Normalize.
\ : Go to Region End.
\ + ctrl: Silence.
\ + option :Go to Selection End.
\ + ctrl + shift: Search Peak.
\ + ctrl + option: Search Silence.

Light Purple: (4)

4: Mute.
4 + ctrl: Mute Track.
4 + ctrl + option + shift: Mute All Tracks of Folder.
4 + ctrl + option + command: Mute off for All.
4 + ctrl + shift:: Mute All Track With Same Instrument of Song.

Green: (5)

5: Cycle.
5 + ctrl: Swap Locators.

Yellow: (6)

6: Solo.
6 + ctrl: Solo Lock.
6 + ctrl + option: Reselect Solo-locked Objects.
6 + ctrl + option + Command: Solo off for all.

Pink: (+)

+ : Go To Right Locator.
+ + ctrl: Set R Locator.
+ + ctrl + shift: Set R Locator by Rounded Song Position.
+ + ctrl + option: Move Locators forward by Cycle Length.

+ + ctrl + option + Command: Set R Locator by Song Position.
+ + shift: Set Locators by next Marker & Enable Cycle.
+ + Command: Set Next higher Format.
- 7 -

Row 4

Green (` Z)

` : Play from Previous Bar.
` + ctrl: Play from L Locator.
` + shift: Play from Beginning.
` + Command: Redo.
Z: Play from Left Window Corner.
Z + ctrl: Play from R Locator.
Z + Command: Undo.
Z + Command + option: Undo History.
Z + Command + ctrl: Delete Undo History.
Z + option: Next note will be flat. Only in MIDI IN mode.

Pink (X C V B)

X: Snip: Cut Time and Move By Locators.
X + ctrl: Insert at Song Position Line.
X + Command: Cut.
X + option: Next note will be sharp. Only in MIDI IN mode.
C: Insert Time and Move by Locators.
C + ctrl: Tie Sequences within Locators.
C + shift: Copy Screen set.
C + Command: Copy.
C + option: Note C. Only in MIDI IN mode.
C + option + shift: Note C*. Only in MIDI IN mode.
V: Set Locators by Object.
V + ctrl: Select Inside Locators.
V + shift: Set Rounded Locators by Object.
V + shift: Paste Screen set.
V + ctrl + option + Command: Align Object Positions Vertically.
V + Command: Paste.
V + option + Command: Paste Multiple.
B: Split by Locators.
B + ctrl: Split Objects by Song Position.
B + ctrl + shift: Split Objects by Rounded Song Position.
B + Command: Clear.
B + option: Note B. Only in MIDI IN mode.
B + ctrl + option : Beam selected Notes.
B + ctrl + option + shift: Default Beams.
B + ctrl + option + Command: Unbeam selected Notes.
Olive (N M ,)
N: Delete Unused Tracks.
N + ctrl: Tracks for Selected Objects.
N + ctrl + option: Delete Track.
N + Command: New
M: Create Track with Next Instrument.
M + ctrl: Tracks for Overlapped Objects.
M + ctrl + option: Create Track.



take the **shortcut**

logickeyboard™

.; Move Selected Objects to Track.
; + ctrl: View Track Automation.
■ Light Purple: (. /)
.; Nudge Event Position by Bar -1.
; + ctrl: Nudge Event Position by Bar -1.
; + ctrl + shift: Nudge Event Length by Beat -1.
; + shift: Nudge Event Length by Bar -1..
; + option: Event Transpose -1.
; + ctrl + option: Nudge Event Position by Format -1.
; + ctrl + option + Command: Nudge Event Position by Tick -1
; + option + Command: Nudge Event Position by Nudge Value.
/; Nudge Event Position by Bar +1.
/ + ctrl: Nudge Event Position by Bar +1.
/ + ctrl + shift: Nudge Event Length by Beat +1.
/ + shift: Nudge Event Length by Bar +1.
/ + option: Event Transpose +1.
/ + ctrl + option: Nudge Event Position by Format +1.
/ + ctrl + option + Command: Nudge Event Position by Tick +1
/ + option + Command: Nudge Event Position by +Nudge Value.
■ (UP)
UP: Zoom Vertical Out.
UP + ctrl: Select Previous Track.
UP + shift: Page Up.
UP + shift + option: Waveform vertical zoom in
UP + Command: Select Previous Event.
UP + option + Command: Toggle Previous Event
UP + ctrl + option + Command: Object Move up.
■ Olive: (1 2)
1: Fast Rewind.
1 + ctrl: Shuttle Rewind.
1 + ctrl + shift: Rewind.
1 + ctrl + option: Rewind By Format Value.
1 + ctrl + option + Command: Scrub Rewind.
1 + Command: Rewind 1 Frame.
2: Fast Forward.
2 + ctrl: Shuttle Forward.
2 + ctrl + shift: Forward.
2 + ctrl + option: Forward By Format Value.
2 + ctrl + option + Command: Scrub Forward.
2 + Command: Forward 1 Frame
- 8 -
■ Red: (3)
3: Record.
3 + ctrl: Record enable Track.
3 + ctrl + shift: Record Repeat.
3 + ctrl + option: Record Toggle.
3 + option: Capture Last Recording as Take.
3 + ctrl + option + shift: Capture Last Recording as Take &
Play.
3 + ctrl + option + Command: Record off for all

3 + ctrl + shift + option + Command: Set regions to recording position.
3 + Command: Deselect all objects except Recording Track.
■ Green: (enter)
PLAY
+ ctrl: Play from Selection.

Row 5

■ (Spacebar Left Down Right)
Spacebar: PLAY / STOP
Spacebar + ctrl : Play / Stop Region.
Spacebar + option: Play / Stop Selection.
Spacebar + Command: Play / Stop All.
Spacebar + ctrl + option: Play / Stop Region to Anchor.
Spacebar + ctrl + option + Command: Play / Stop Region from Anchor.
Left: Zoom Horizontal Out.
Left + ctrl: Select Previous Object.
Left + shift: Page Left.
Left + shift + ctrl: 1 / 3 Page Left.
Left + shift + ctrl + option: 1 / 8 Page Left.
Left + option: Previous Event.
Left + Command: Select First.
Left + ctrl + option + Command: Object Move Left.
Left + ctrl + option: Previous Staff.
Down: Zoom Vertical In.
Down + ctrl: Select Next Track.
Down + Command: Select Next Event.
Down + shift: Page Down.
Down + shift + option: Waveform vertical zoom out.
Down + option + Command: Toggle Next Event
Down + ctrl + option + Command: Object Move Down.
Down + ctrl + option: Toggle Selection.
Right: Zoom Horizontal In.
Right + ctrl: Select Next Object.
Right + shift: Page Right.
Right + shift + ctrl: 1 / 3 Page Right.
Right + shift + ctrl + option: 1 / 8 Page Right.
Right + option: Next Event.
Right + Command: Select Last.
Right + ctrl + option + Command: Object Move Right.
Right + ctrl + option: Next Staff.
■ Olive: (0)
0: Stop
0 + ctrl: Stop Go to Last Play Position
0 + option: Stop Go to Left Locator.
0 + ctrl + shift: Go to Last Play Position.
■ Orange: (.)
.; Pause
; + ctrl: Go to Selection.